



# **Keeping Children Safe in Emergencies**



**Save the Children**

# CHILDREN IN EMERGENCIES



- On average 100 million children are impacted by disaster each year (UNISDR).
- **Children and young people are resilient and resourceful** in disaster settings, but are disproportionately vulnerable to the effects of emergencies, especially children living with disabilities.
- Children may be separated from their families and caregivers, unable to go to school, and at greater risk of exploitation, poverty and violence when an emergency occurs.
- Children who are aware of hazards and have participated in planning activities have lower levels of anxiety during emergencies than those who have not.



# IMPACT OF TRAUMA ON CHILDREN



Every child responds to the trauma of a natural disaster differently.

Before, during and after an emergency, children can suffer from:

- Acute anxiety
- Fear
- Stress
- Feelings of isolation
- Depression
- Confusion
- Anger



# OUR EMERGENCY WORK - AROUND THE WORLD



## Our teams are always ready to go.

In an emergency we provide life-saving essentials – food, clean water, healthcare and shelter – and services such as education and protection support for children.

Our teams of experts are strategically placed in emergency hotspots around the world. They're fully equipped with the best tools – mobile clinics, life-saving medicine and nutrition supplements – to save lives in the first stages of an emergency.



### Yemen Crisis

Since March 2015, the situation in Yemen has deteriorated into the world's largest humanitarian crisis. Our teams are delivering food, medicine and humanitarian support, treating more than 140,000 children suffering from malnutrition.



### Indonesia Tsunami

In late September 2018 a devastating tsunami and earthquake struck Sulawesi, Indonesia. More than 1,500,000 people have been impacted by this disaster including at least 600,000 children.



### Child Hunger Crisis

A severe hunger crisis is putting children's lives in danger across parts of North Africa. Since early 2018, we have been working in South Sudan, Somalia, Ethiopia, Kenya, Nigeria and Yemen to stop children dying from hunger.



### Rohingya Crisis

The Rohingya Crisis is the fastest-growing humanitarian emergency in the world today. We are on the ground in Cox's Bazar, Bangladesh where more than 700,000 people are in urgent need after fleeing violence in Myanmar.

# SAVE THE CHILDREN AUSTRALIA



# OUR WORK IN EMERGENCIES – IN AUSTRALIA



## Townsville Flood Recovery



Heavy rain caused by the convergence of a monsoon and a slow moving tropical low caused unprecedented flooding in Townsville and surrounding areas. Save the Children delivered Child Friendly Spaces and family support across three recovery centres over a three-week period, as well as outreach support to families affected by the flooding in Cloncurry.



Cyclone Trevor (NT) Response  
Tasmanian Bushfire response  
Daly River Flooding (NT)  
[most recent QLD example?]

JANUARY 30 2019 - 12:10PM

## Children affected by bushfires given help

Sue Bailey

Local News

SHARE TWEET



HELPING HAND: Youth worker Lucy Larby with Zubin, 3, at Save the Children's child friendly space in Huonville. Zubin and his family evacuated from their home because of the bushfire threat. Photo credit: Simone Johns/Save the Children

Children would be among the most affected by Tasmania's bushfires, says Save the Children.

Tasmanian manager Lisa Cuatt said Save the Children had set up a "child friendly space" at the Huonville evacuation centre to help children.

"It's clear that the children coming to the child friendly space are facing a great deal of uncertainty, and they need a way to process and deal with this experience," Ms Cuatt said.

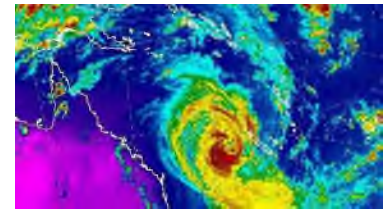
# BUILDING RESILIENCE – A RISING NEED



## 425 Natural Disasters in Australia between 2006-2019

- 76 Severe storms
- 136 Major Bushfires
- 140 Floods
- 32 Cyclones
- 38 Other extreme weather events

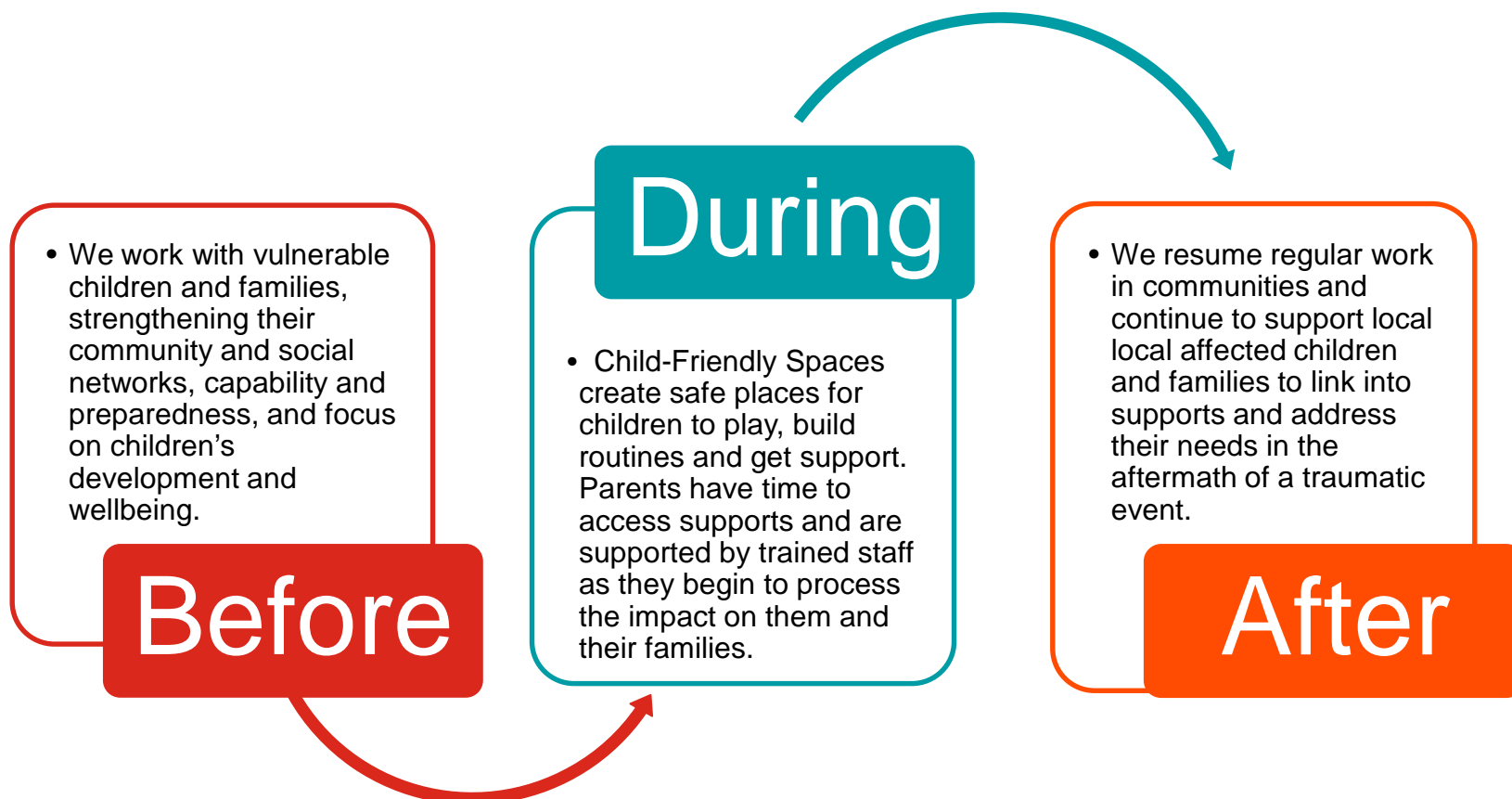
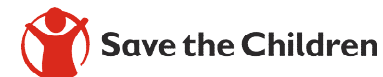
2018 drought > Queensland Debbie > Heatwave > 140 bushfires in early 2019 > Cyclone Owen > Northern Queensland flooding...



***“consecutive, simultaneous and record-setting events are a preview of the compounding, cascading effects that lie ahead for Australia as the climate warms.”***

Australian Strategic Policy Institute 2019

# OUR WORK BUILDING RESILIENCE

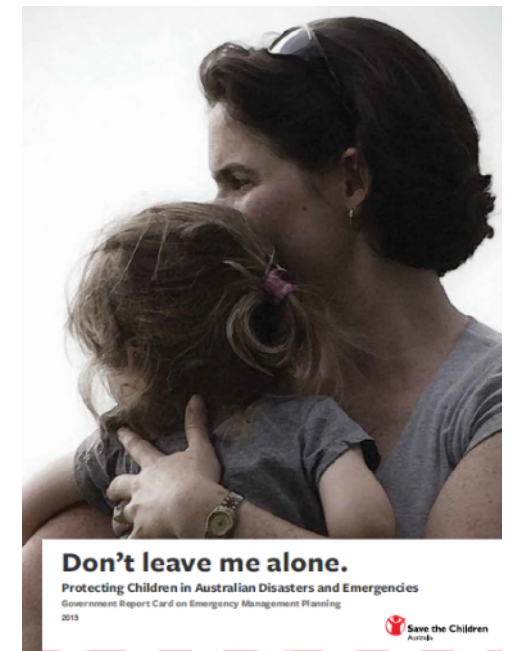


# BEFORE AN EMERGENCY



- Agreements & MOUs – Red Cross, local Council, State government
- Disaster Resilience Australia-New Zealand School Education Network
- Bushfire and Natural Hazard Cooperative

**Don't Leave Me Alone Report 2013**  
**Children's needs must be included**  
**in disaster planning**



# BEFORE AN EMERGENCY

## Preparedness in Programming

- Preparedness is embedded into our yearly program cycle
- We work with families around their preparedness plans based on the specific needs of their locations
- We work with children and young people to build their resilience
- Where we work in educational facilities we support them to build resilience responses



## DURING AN EMERGENCY **CHILD FRIENDLY SPACES**



- To protect children from physical harm and psychological distress.
- To offer children opportunities to develop, learn, play, and build/strengthen resilience after an emergency.
- To use art and craft activities as a way to express their feelings.
- To help children establish a sense of security and build self-esteem.
- To identify vulnerable children and link them to relevant services.
- To give parents the chance to concentrate on the immediate needs of their families without having to worry about their children.
- To step in when local services for children are disrupted by the disaster.

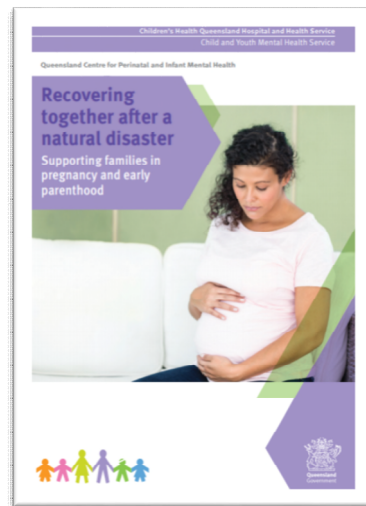


# DURING AN EMERGENCY CHILD FRIENDLY SPACES



## Soft Entry Point to Support

- CFS provides a 'soft entry point' to support families
- Specialist intensive family support
- Psycho-social First Aid
- Information, advice and referral



# AFTER AN EMERGENCY



## Journey of Hope

- A school resilience program designed in the aftermath of Hurricane Katrina
- Has been implemented in multiple countries, most recently in New Zealand after the Christchurch earthquake

### Evaluation:

- For youth, participation reduced emotional distress and enhanced overall well-being
- For caregivers, participating enhanced knowledge about stressors and coping strategies and built community support



## AFTER AN EMERGENCY

### Capacity Building and Sector Support

- Programs like Everyday Positive Play use capacity building and sector development models.
- We aim to build the capacity of other organisations to appropriately respond using child-centred and trauma-informed practices
- Our methodology includes coaching, mentoring and practical on the ground support that is designed to improve responses in child-centred practice



# QUESTIONS?



**How does your organisation plan for the specific needs of children in an emergency?**

**What do you think Save the Children needs to include in a CFS to ensure they are safe and appropriate for children?**

**Do you have any questions?**

